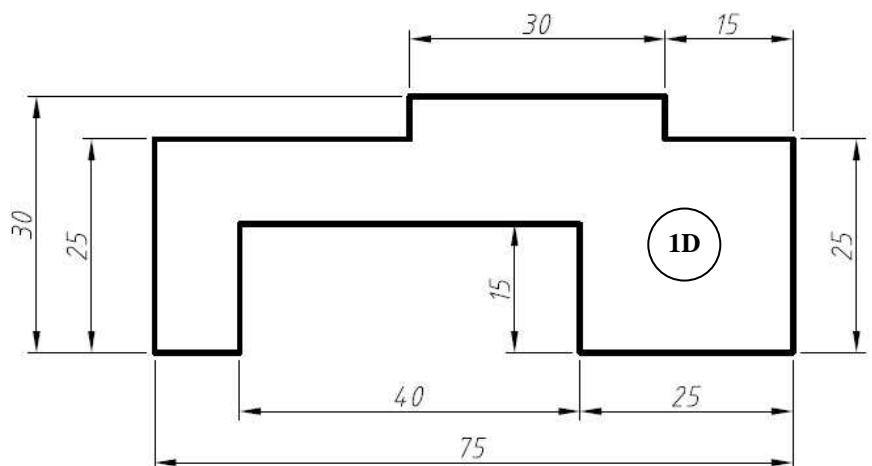
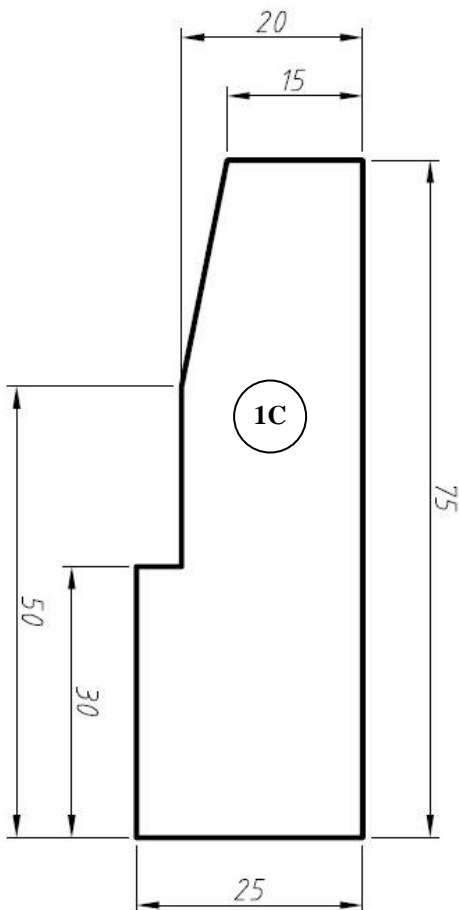
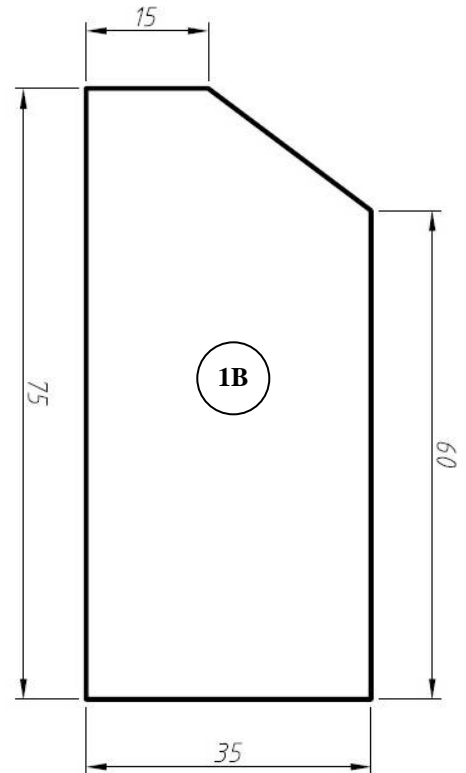
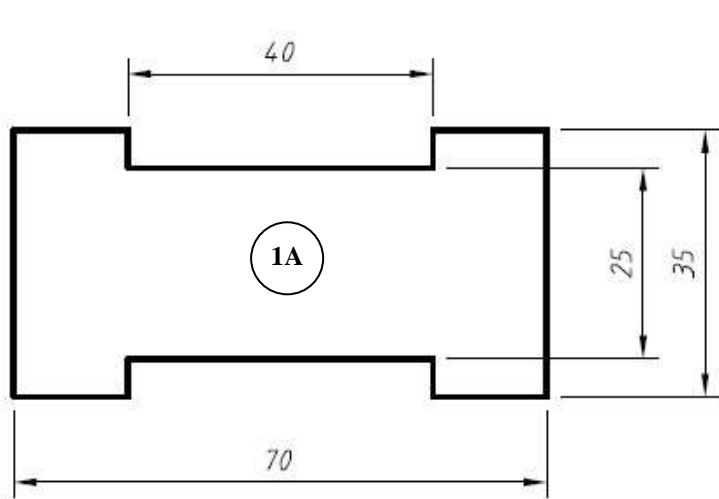
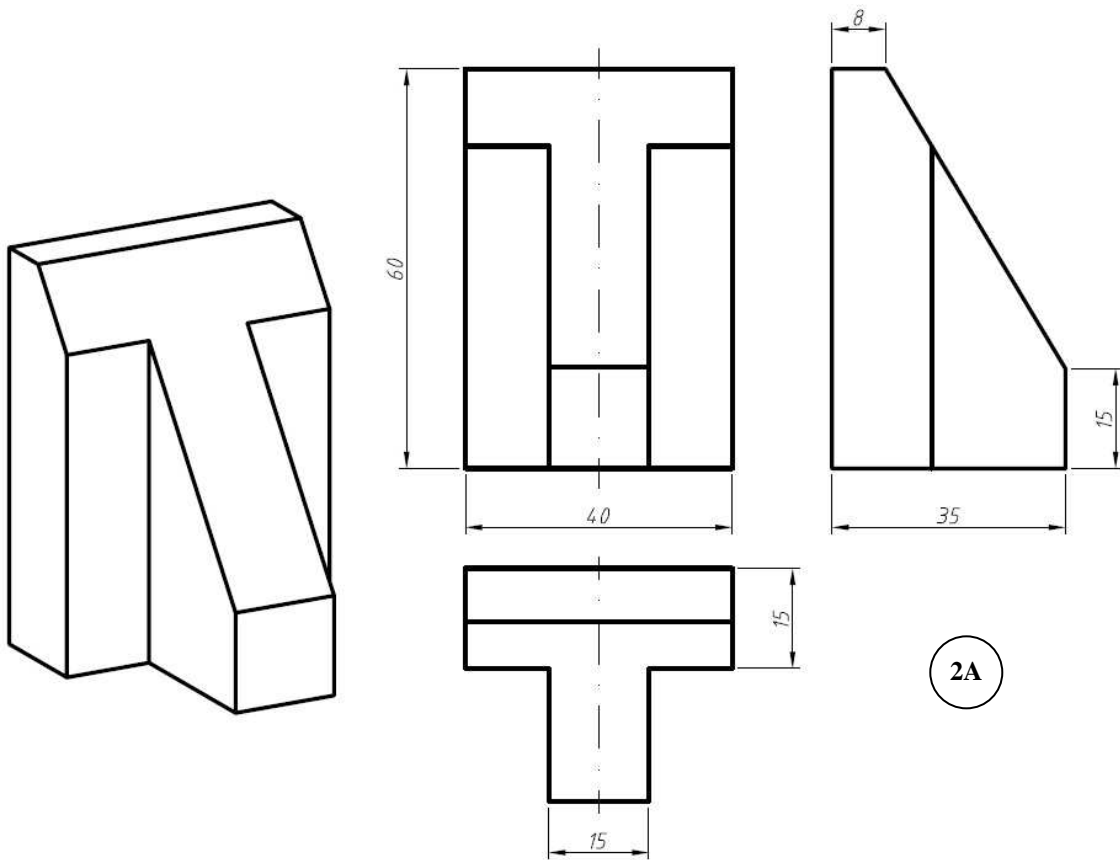


LISTA DE EXERCÍCIOS PARA AUTOCAD

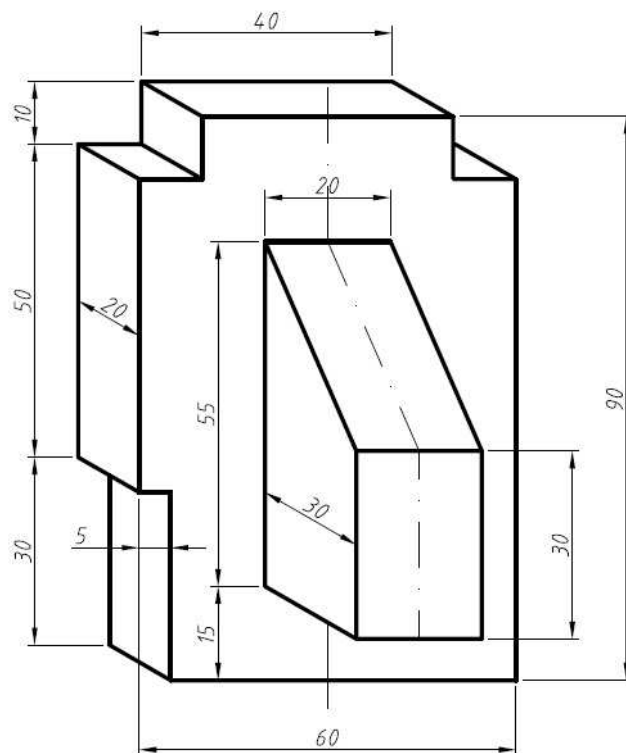
1. Desenhe as peças abaixo (não é necessário colocar as cotas);
As peças podem ser feitas no mesmo arquivo;
Comandos a utilizar: Line, Object Snap e Ortho (ver ícones no rodapé da janela).



2. Desenhe as 3 vistas (frontal, superior e lateral esquerda) das peças abaixo;
 Não é necessário colocar as cotas;
 As vistas devem estar alinhadas;
 Comandos a utilizar (além dos já vistos): Offset e Trim.



2A



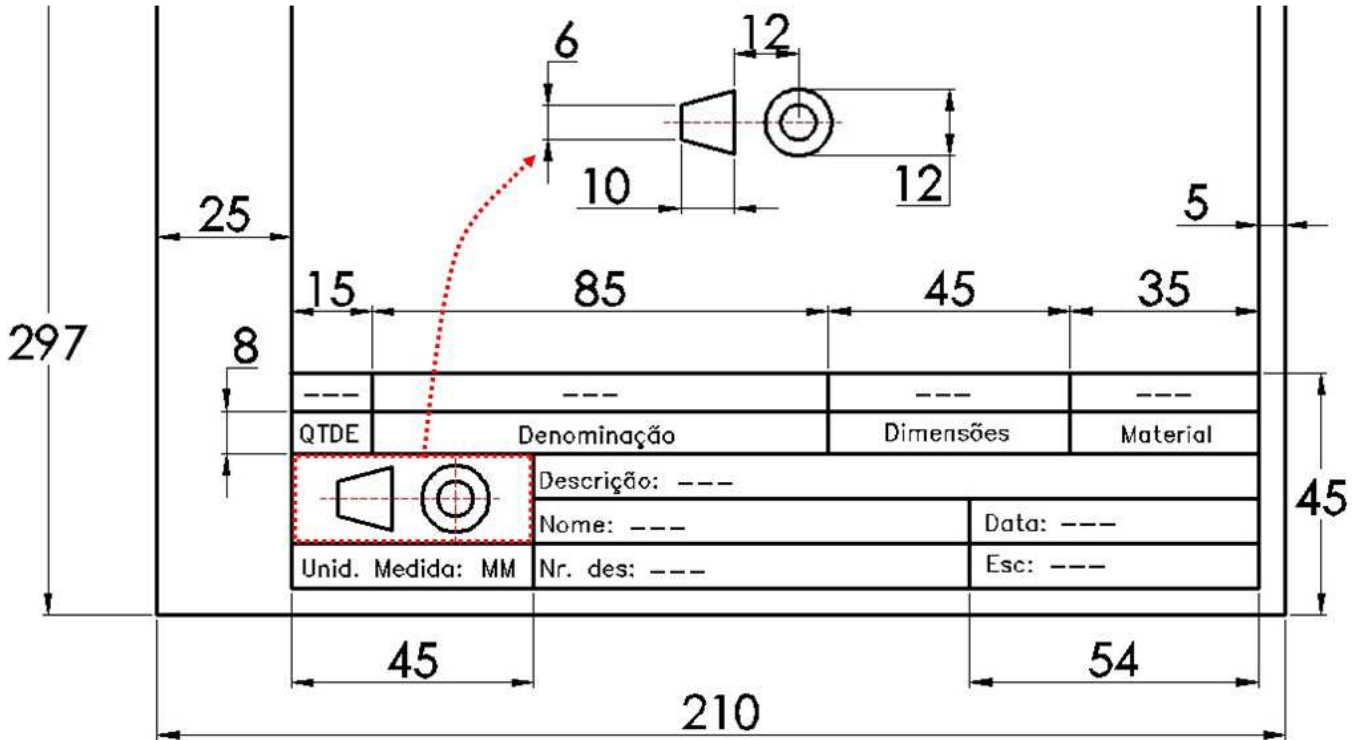
2B

3. Desenhe uma folha A4 (210x297) e crie a legenda abaixo;

Não é necessário colocar as cotas;

Você pode preencher o campo “Nome:” com seu nome no lugar dos traços (- - -);

Dica: após adicionar um texto e escolher um tamanho adequado use Ctrl+C e Ctrl+V Comandos a utilizar (além dos já vistos): Circle, Multiline Text e Block.



4. Desenhe uma folha A3 (297x420 Paisagem) e insira/copie o formato feito;

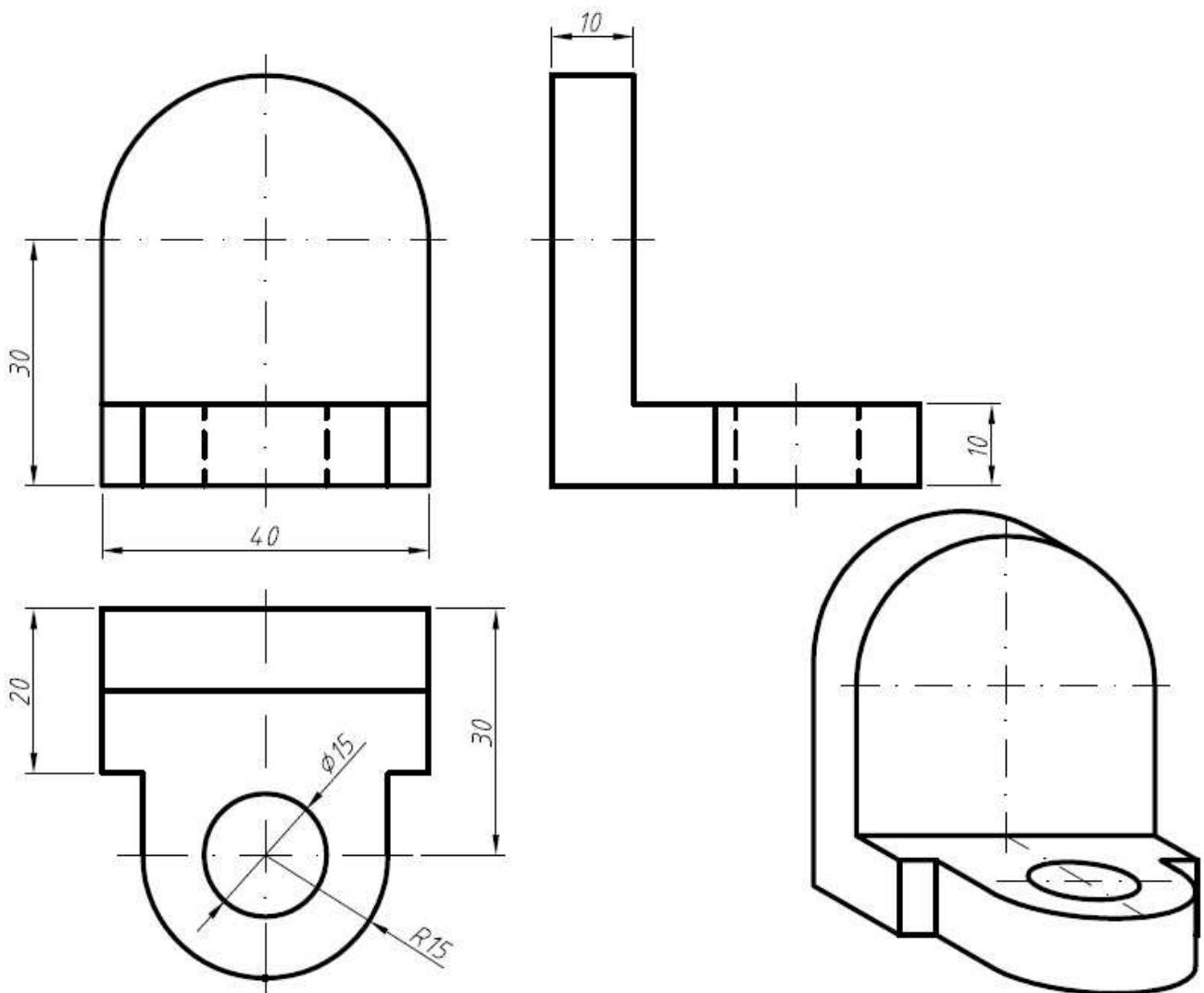
Dica: use um ponto de referência quando for copiar a legenda;

Comandos a utilizar (além dos já vistos): Copy.

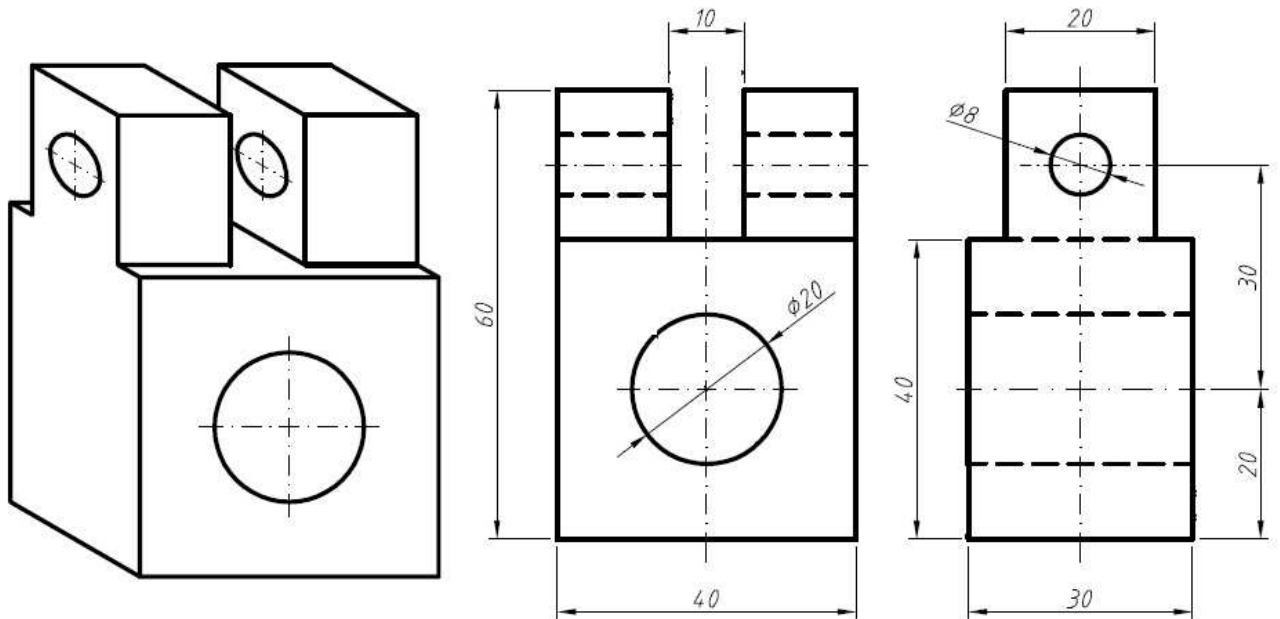
5. Abra um arquivo novo e crie os Layers abaixo.
Comandos a utilizar (além dos já vistos): Layers.

NOME	COR	NOME DA LINHA	ESPESSURA
0	Branca	Continuous	0.25
Tracejada	Amarela	ISO dash	0.25
Corte	Marrom	ISO dash dot	0.35
Centro	Vermelha	ISO dash dot	0.18
Cota	Verde	Continuous	0.18
Hachura	Roxa	Continuous	0.18
Texto	Amarela	Continuous	0.18
Simbologia	Azul	Continuous	0.18

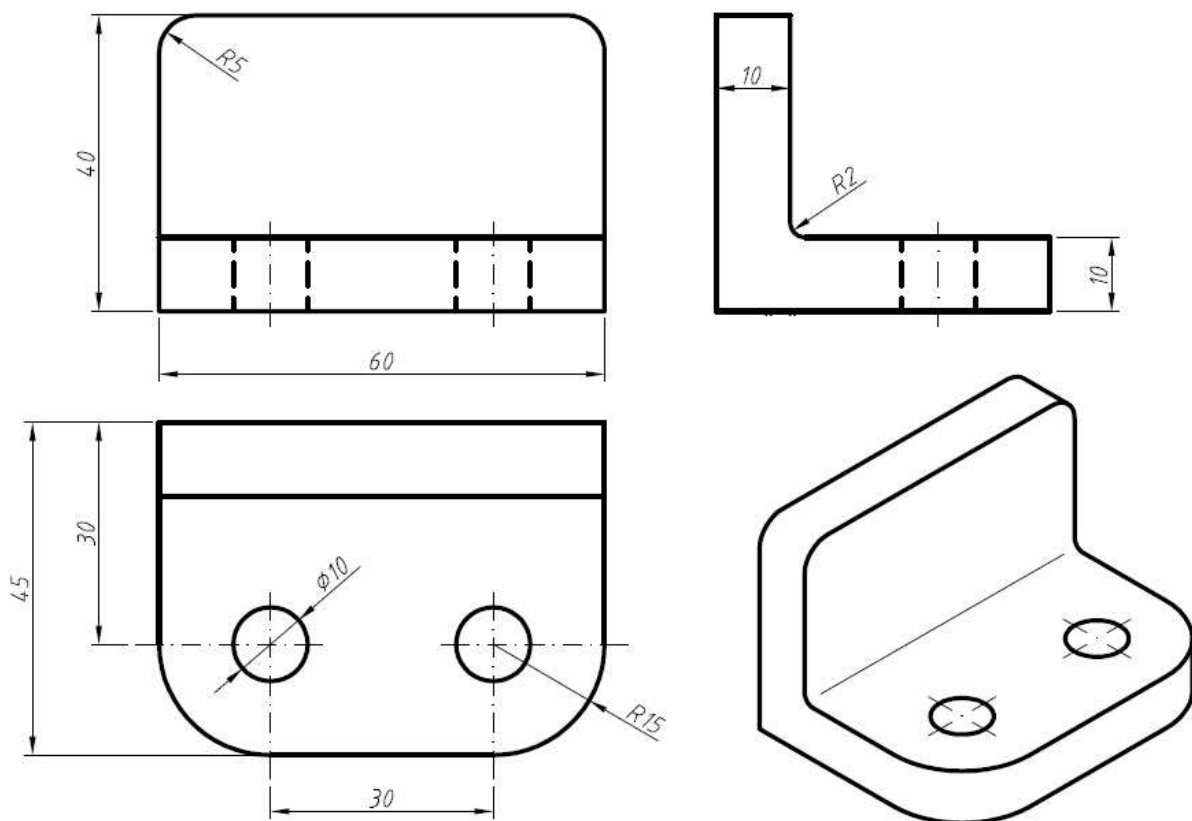
6. Desenhe as vistas da peça abaixo utilizando Layers;
Cote todas as vistas;
As vistas devem estar alinhadas;



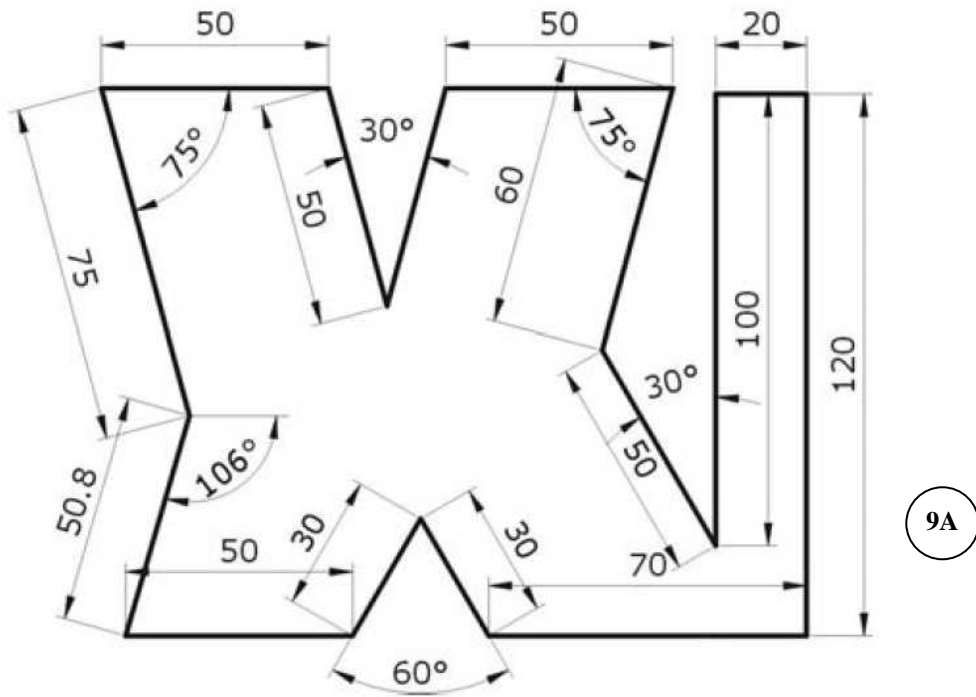
7. Desenhe as vistas da peça abaixo utilizando Layers;
 Cote todas as vistas;
 As vistas devem estar alinhadas;



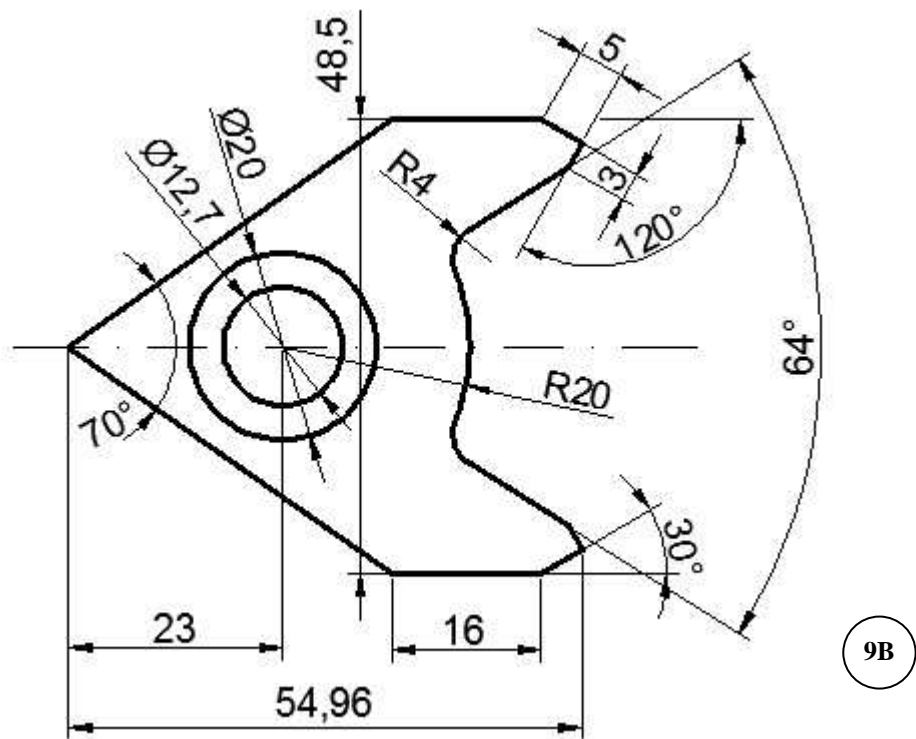
8. Desenhe as vistas da peça abaixo utilizando Layers;
 Cote todas as vistas;
 As vistas devem estar alinhadas;
 Comandos a utilizar (além dos já vistos): Fillet.



9. Desenhe e cote as peças abaixo utilizando Layers;
Comandos a utilizar (além dos já vistos): ângulos (<)



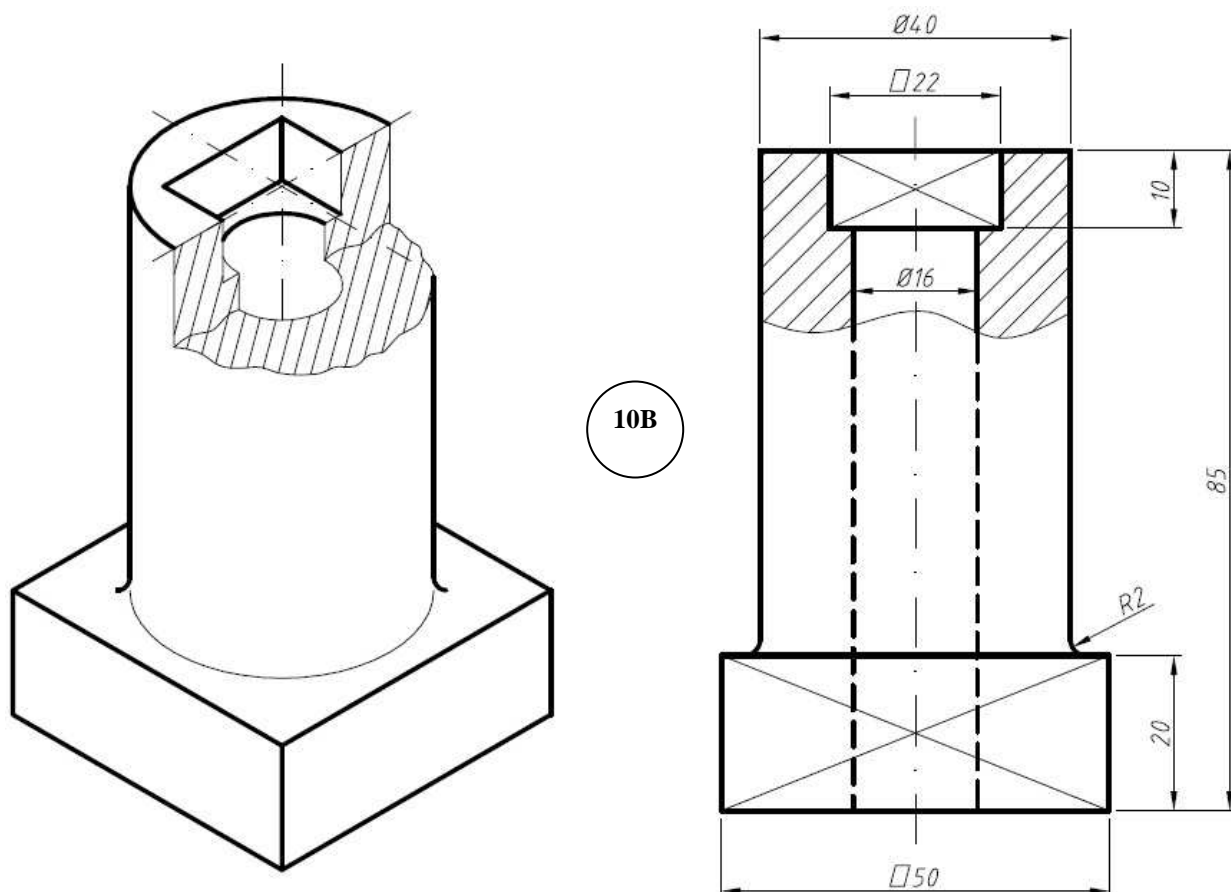
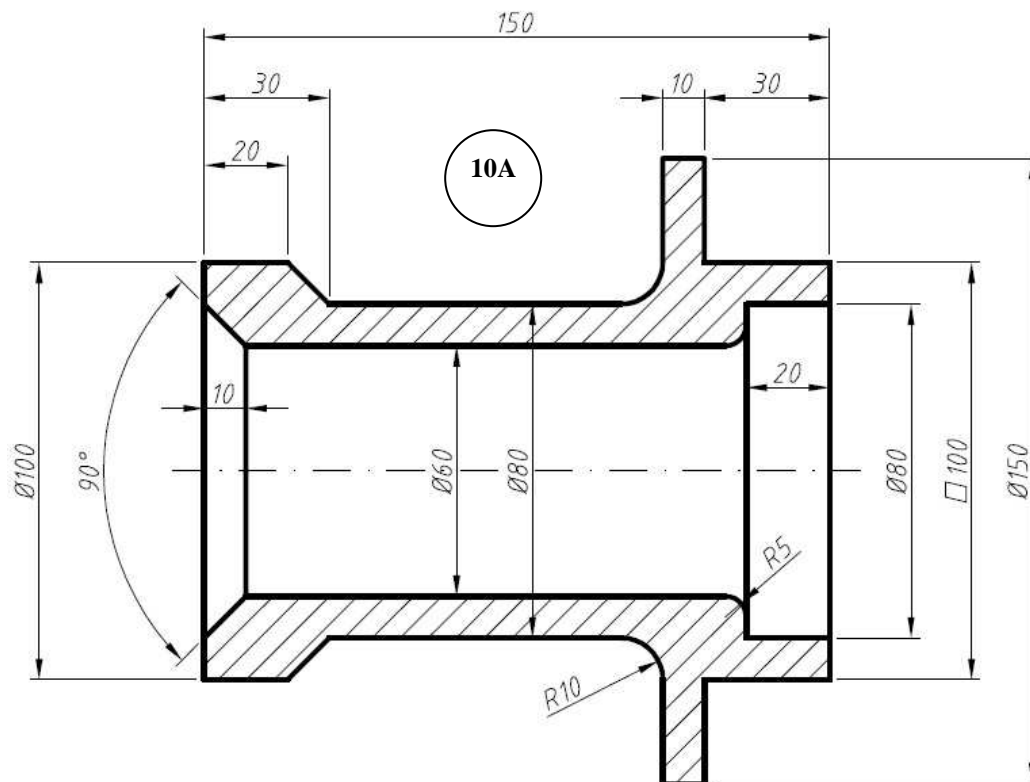
9A



9B

10. Desenhe e cote as vistas utilizando Layers;

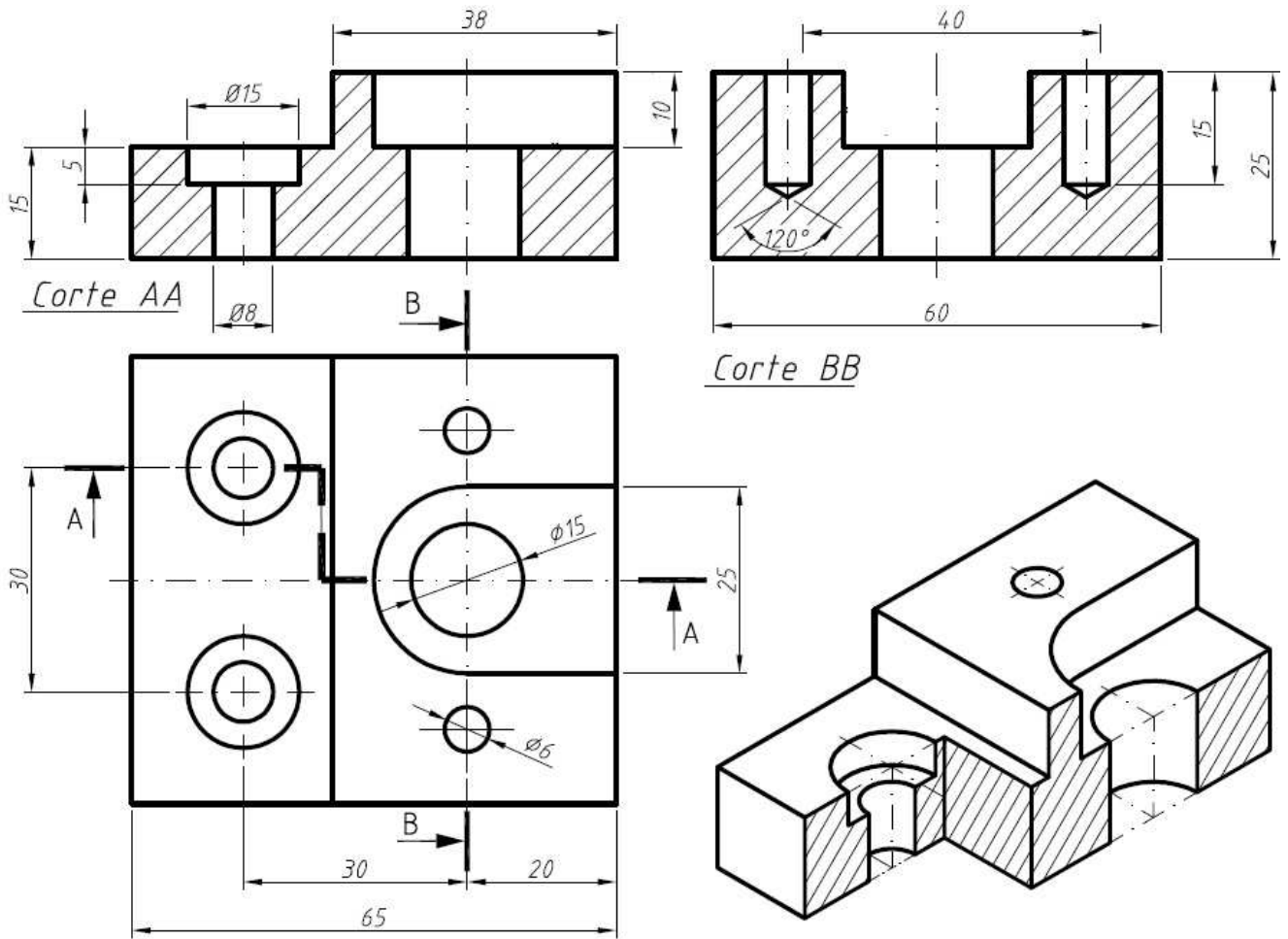
Comandos a utilizar (além dos já vistos): Hatch e edição de cotas.



11. Desenhe e cote as vistas utilizando Layers;

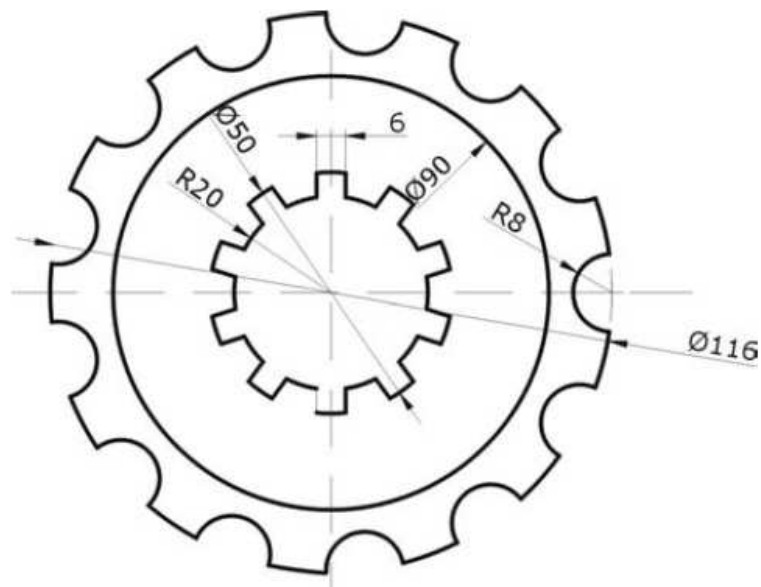
As vistas devem estar alinhadas;

Comandos a utilizar (além dos já vistos): Mirror (espelhamento).

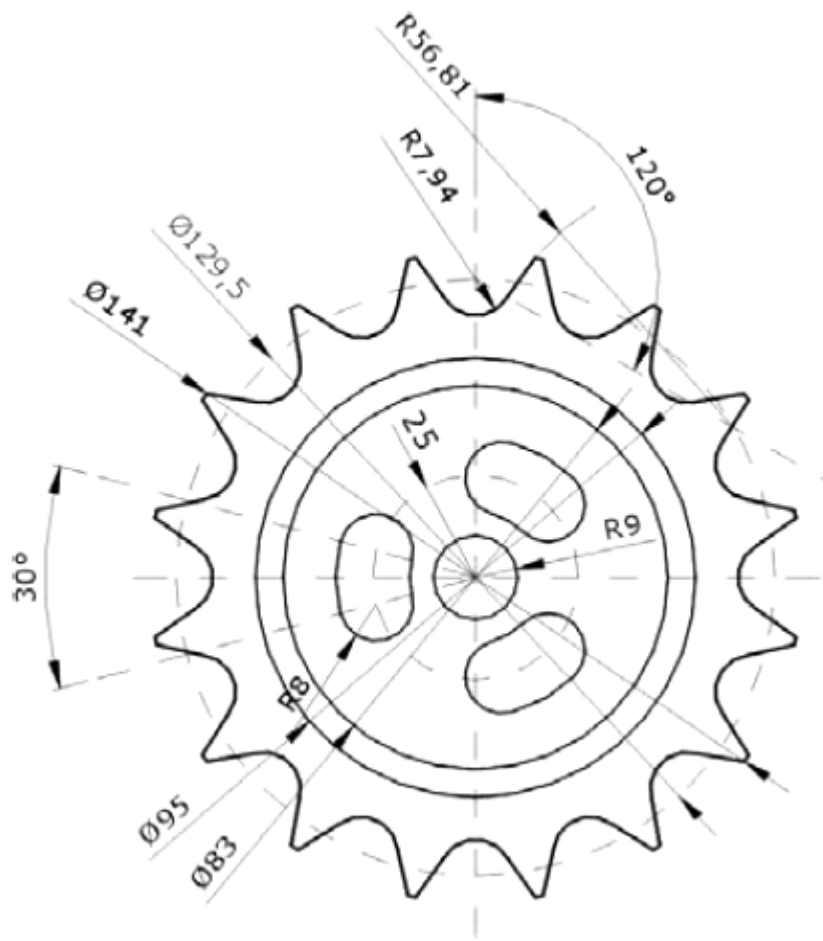


12. Desenhe e cote a vista utilizando Layers;

Comandos a utilizar (além dos já vistos): Array (polar).

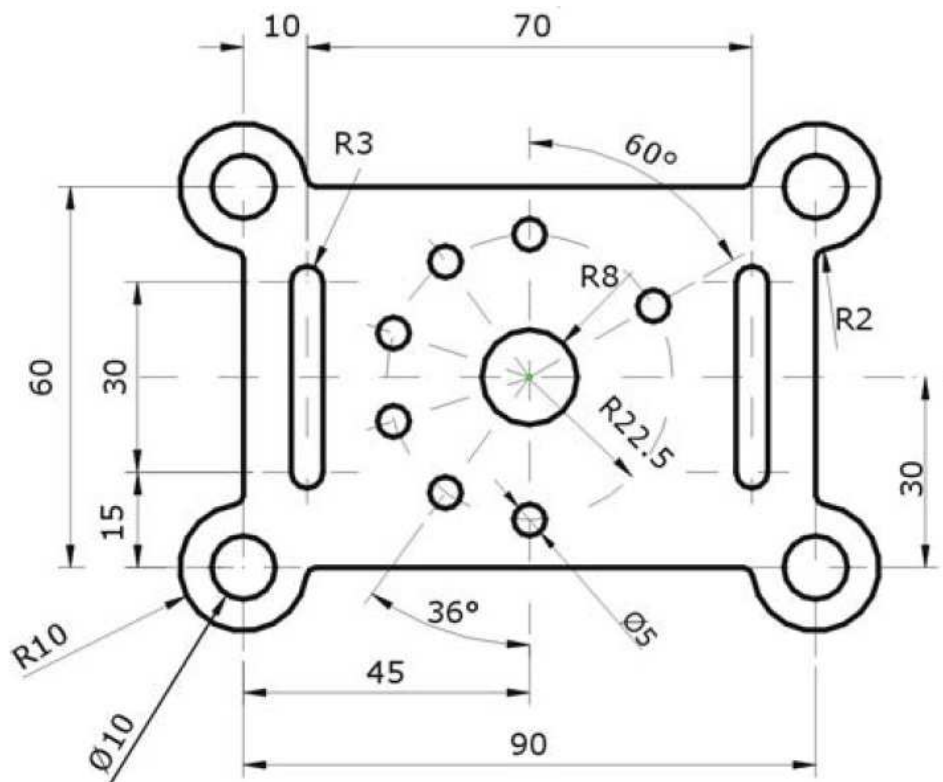


13. Desenhe e cote a vista utilizando Layers;

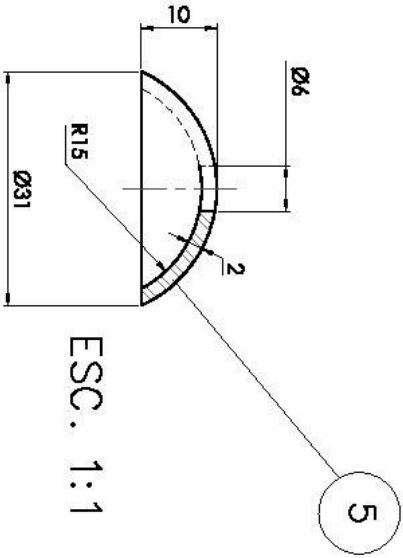
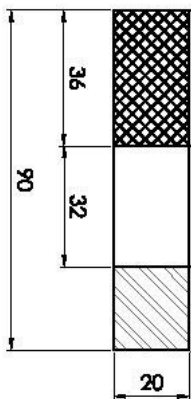
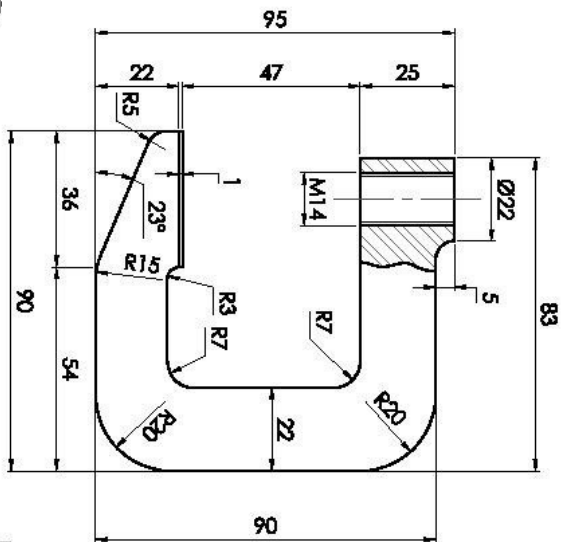
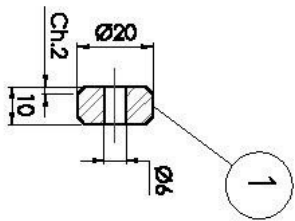
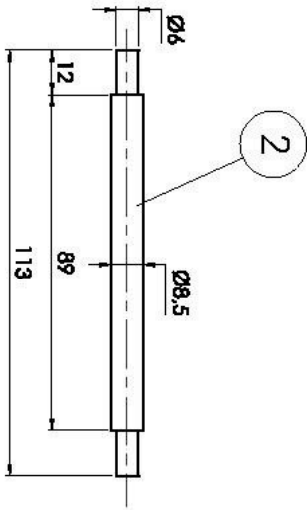
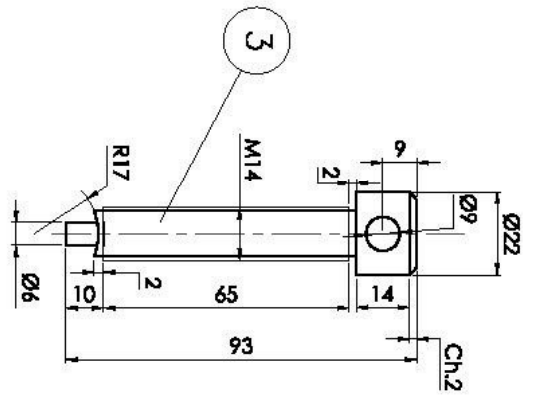
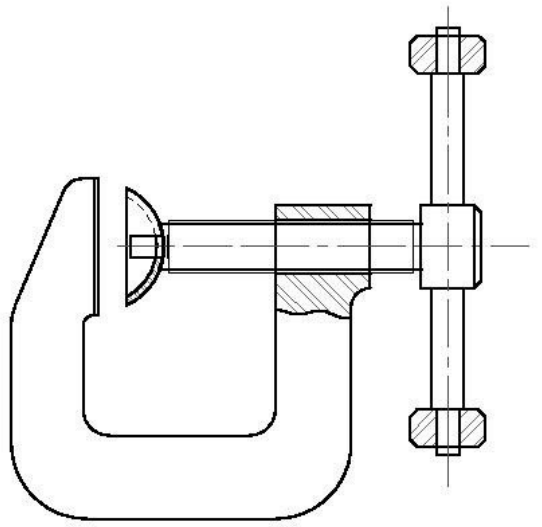


14. Desenhe e cote a vista utilizando Layers;

Comandos a utilizar (além dos já vistos): Array (rectangular).

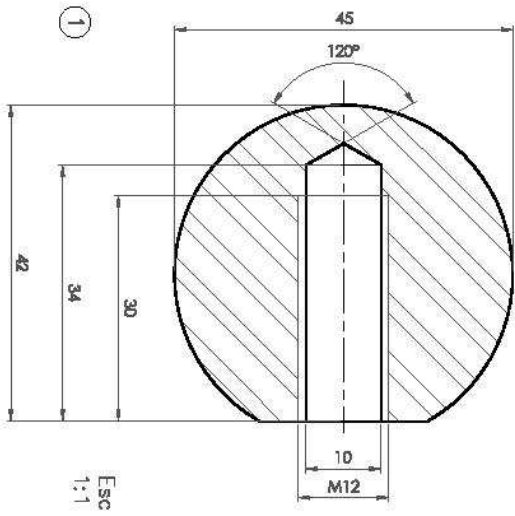
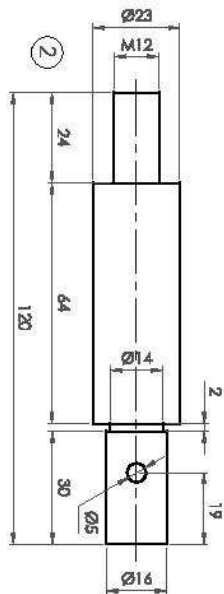
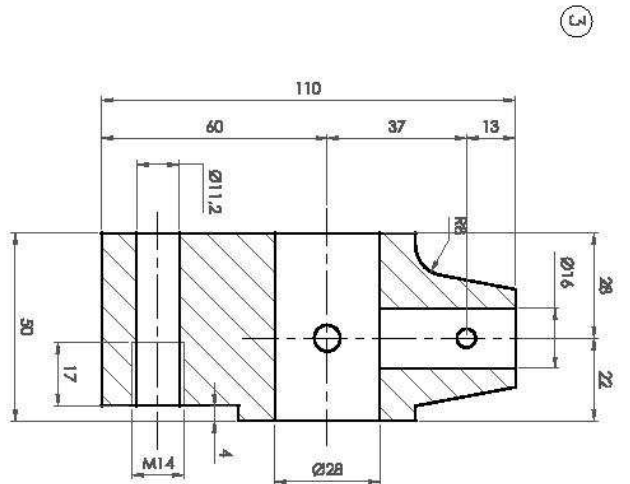
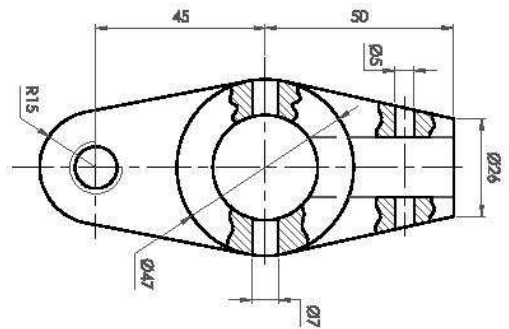
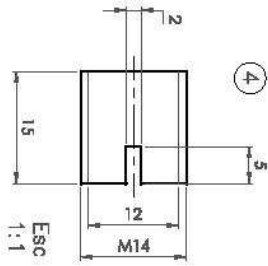
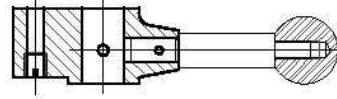
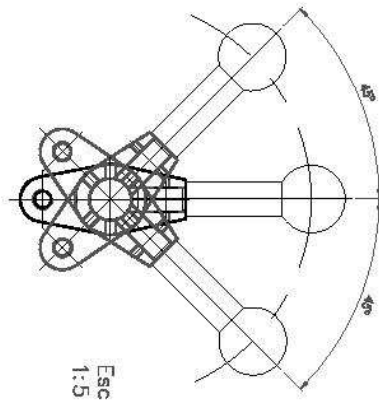


15. Crie o projeto abaixo no AutoCAD.

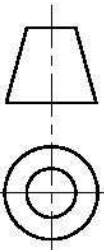


5	1	Mordente		Aço 1020
4	1	Corpo		Aço 1020
3	1	Parafuso	Ø22 x 93 – M14	Aço 1020
2	1	Manípulo	Ø8,5 x 113	Aço 1020
1	2	Encosto	Ø20 x 10	Aço 1020
		QTDE	Denominação	Dimensões
			Descrição: GRAMPO	Material
			Nome:	Data:
		Unid. Medida: MM	Nr. des: 007-5	Esc: 1:2

16. crie o projeto abaixo no AutoCAD.



4	1	Parafuso sem cabeça	M14 x 15	Aço 1020
3	1	Corpo		Ferro fundido
2	1	Alavanca	∅23 x 120	Aço 1020
1	1	Esfera	∅45	Aço 1010
POS	Q TDE	Denominação	Dimensões	Material



Nome: Descrição: Alavanca de Comando

Data:

Unid. Medida: MM

Nr. des: Pro-Tec 7-10

Esc: 1:2